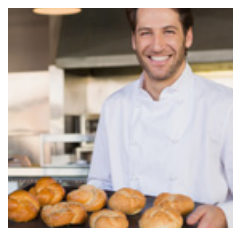
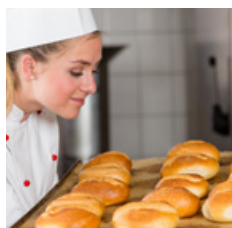


# REGO® ROLL FIXER AND ROLL CUTTER EASY

Bread slicer for an even cut with no risk of injury

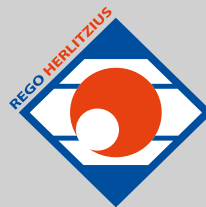
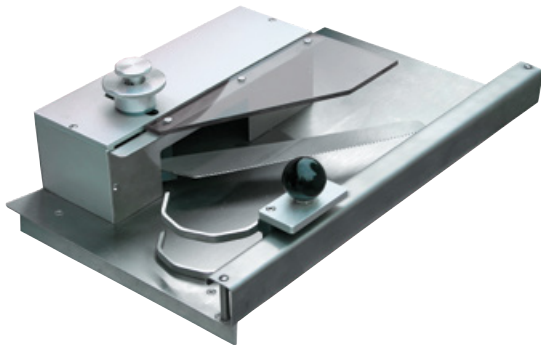


The perfect  
addition  
to any snack  
counter.



**REGO® HERLITZIUS**  
*The Bakery Equipment People*

# REGO® Roll Fixer and Roll Cutter Easy



**REGO® HERLITZIUS**  
*The Bakery Equipment People*

## PRACTICAL, EFFICIENT, AND PORTABLE: THE REGO® ROLL FIXER:

- For manual cutting open and slicing through rolls, baguettes, hot dogs, and much more
- Continuous adjustment of height and cutting depth
- Efficient cutting in seconds, without risk of injury
- Easy to relocate
- Easy to clean

## RELIABLE, QUIET, AND SAFE: THE REGO® ROLL CUTTER EASY:

- For automatic cutting open and slicing through rolls, baguettes, hot dogs, and much more
- Continuous adjustment of height and cutting depth
- Continuous adjustment of feed-in height and throughput speed
- Efficient cutting in seconds, without risk of injury, in continuous process
- Easy to relocate
- Extremely durable stainless steel construction
- Particularly quiet
- Easy to clean

## MACHINE DATA:

| Machine type                        | Roll Fixer | Roll Cutter        |
|-------------------------------------|------------|--------------------|
| Mains voltage [Volt]                |            | 230 / single-phase |
| Drive motor [kW/min <sup>-1</sup> ] |            | 0,24               |
| Fusing [A]                          |            | 16                 |
| Slice width [mm]                    | 80         | 20-100             |
| Slice height [mm]                   | 80         | 30-75              |
| Slice length [mm]                   | 180        | 30-600             |
| Noise level [dB (A)]                |            | 62                 |
| Height A [mm]                       | 130        | 1050               |
| Width B [mm]                        | 300        | 420                |
| Depth C [mm]                        | 500        | 1060               |
| Net weight [approx. kg]             | 5          | 38                 |

## REGO HERLITZIUS GMBH

Bäckerei- und Konditorenmaschinen

Hatzfelder Straße 115  
D-42281 Wuppertal

Tel.: 0049 (0) 2 02 · 269 200 - 10  
Fax: 0049 (0) 2 02 · 269 200 - 11  
mail@rego-herlitzius.com

[www.rego-herlitzius.com](http://www.rego-herlitzius.com)

